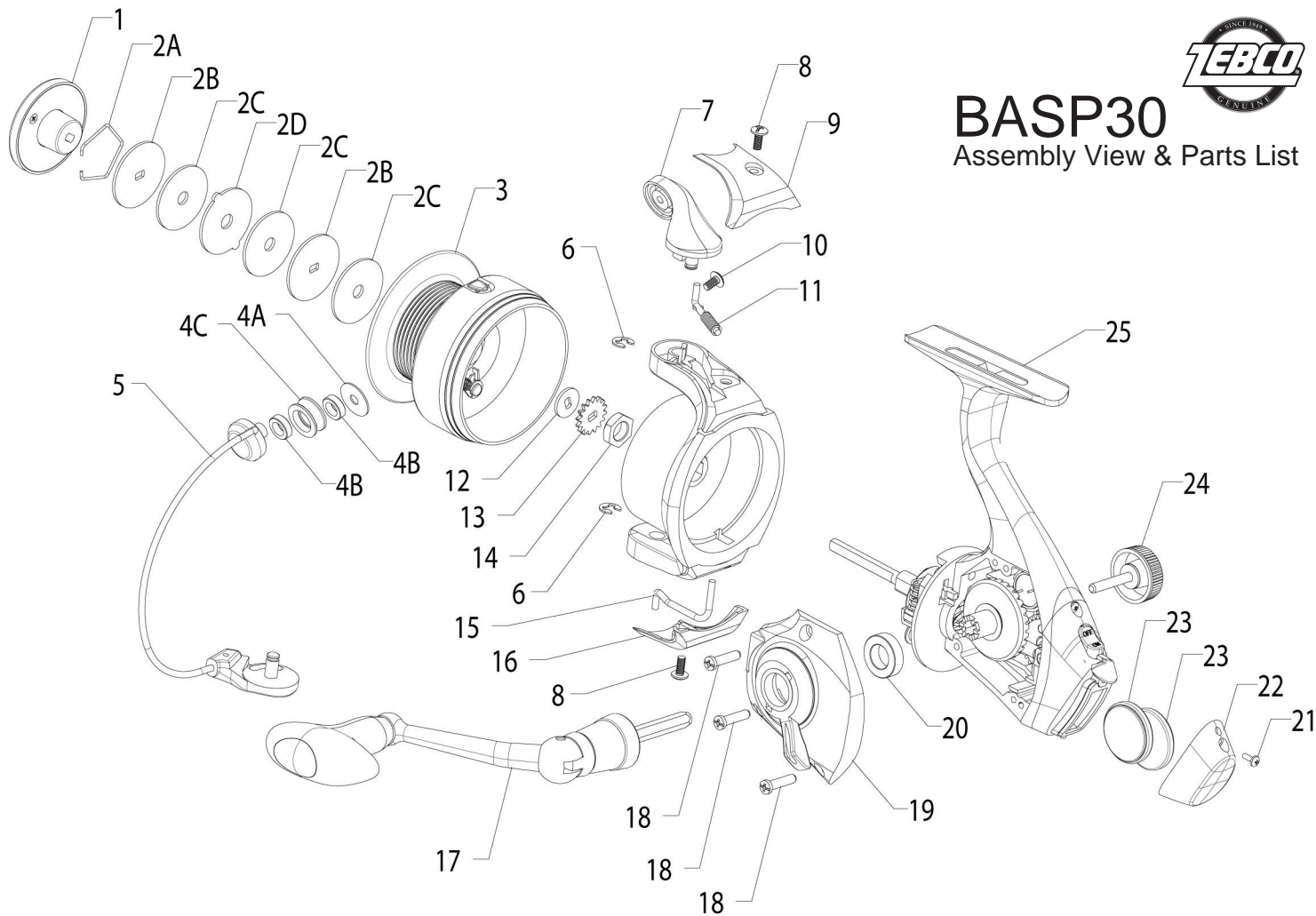




# BASP30

## Assembly View & Parts List



Key #	Description	Part No.
1	Drag Knob Assembly	HG332-01
2	Drag Washer Kit - includes	HG480-01
2A	Drag Washer Retainer	
2B	Drag Washer 'D'	
2C	Drag Friction Washer	
2D	Keyed Drag Washer	
3	Spool Assembly	HG321-01
4	Line Roller Kit - includes	HG404-01
4A	Line Roller Washer	
4B	Line Roller Bushing	
4C	Line Roller	
5	Spool Assembly	HG321-01
6	E-Clip	EG034-01
7	Arm Lever	HG007-01
8	Rotor Screw	XG077-01
9	Rotor Cover, Arm Lever Side	HG087-01
10	Line Roller Screw	HG108-01

Key #	Description	Part No.
11	Bail Spring	FG022-01
12	Center Shaft Washer	FG056-01
13	Clicker Gear	FG037-01
14	Rotor Nut	EG006-01
15	Kick Lever	HG019-01
16	Rotor Cover, Bail Holder Side	HG024-01
17	Handle Assembly Kit - includes	HG4318-01
17	Handle Assembly	
25	Handle Retainer Assembly	
18	Side Cover Screw	FG057-01
19	Side Cover Assembly	N/A
20	Bushing	HG027-01
21	Rear Cap Screw	XG062-02
22	Body Rear Cap	HG145-01
23	Battery, Lithium CR20-32	XE157-01
24	Handle Retainer Assembly	HG373-01
25	Body Assembly	N/A

